

KARBANK

REAL ESTATE COMPANY

INDUSTRIAL | OFFICE | COMMERCIAL
BROKERAGE & DEVELOPMENT
ESTABLISHED 1950

115,400 SF
FOR SALE OR LEASE



10800 AMBASSADOR DRIVE KANSAS CITY, MO OFFICE AND WAREHOUSE BUILDING

FEATURES

- 8,000 +/- SF office area
- 9 dock-high doors
- 28' x 30' clear ceiling height
- 4,000 amps, 3-phase power
- 50' x 50' column spacing
- 359 parking spaces
- Multiple production areas
- Great access and visibility to I-29

FOR SALE
\$12,950,000

FOR LEASE
\$5.95/SF NNN

Taxes: \$1.64/SF
Insurance: \$0.13/SF
CAM: Self-performed by tenant

For more information
please contact

JOHN DELZER
jd@karbank.com

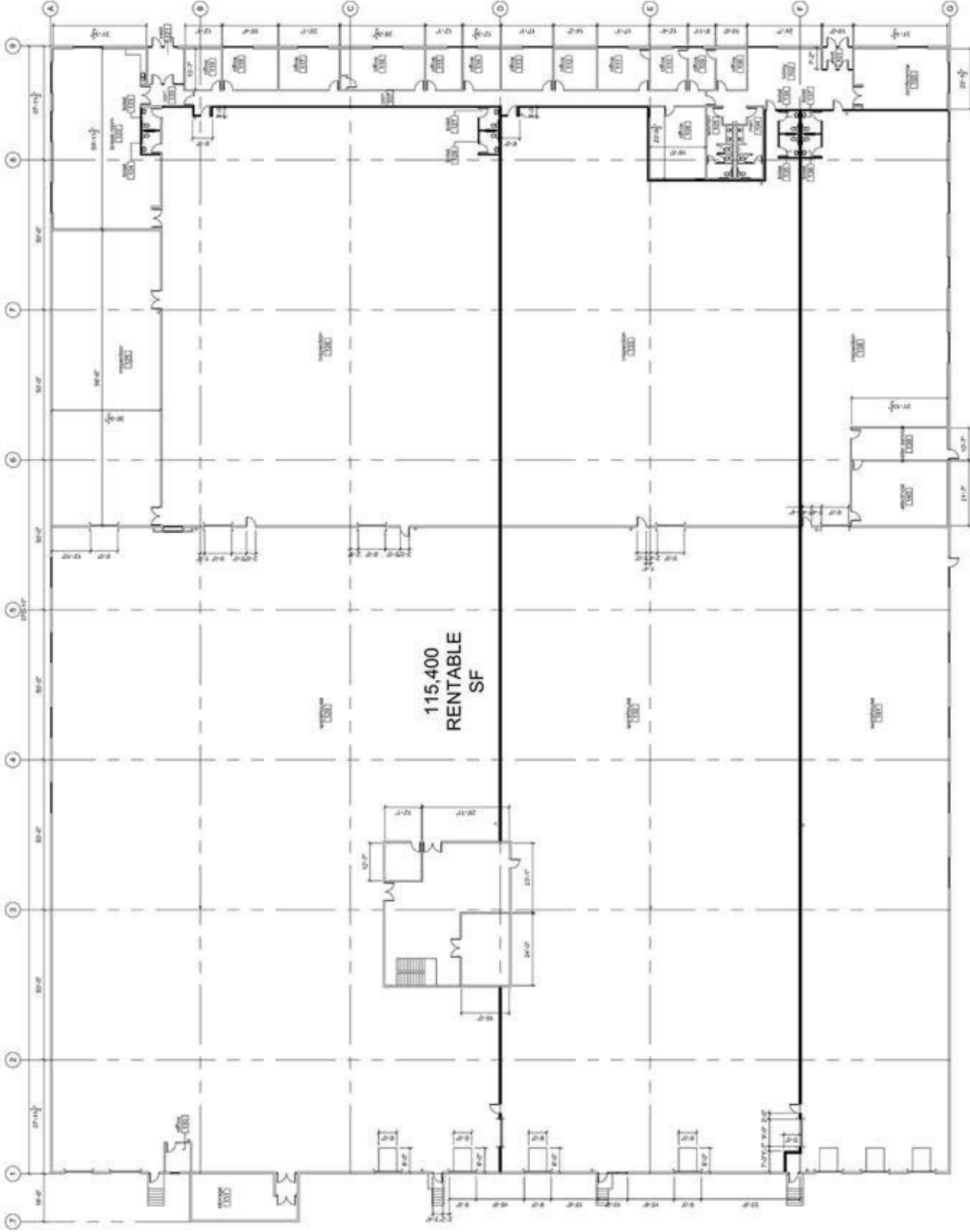
PAUL FOGEL, SIOR
pf@karbank.com

THE BARNEY BUILDING
2000 SHAWNEE MISSION PARKWAY
SUITE 400
MISSION WOODS, KS 66205

816.221.4488
816.221.4494

KARBANK.COM

Information furnished regarding property is from sources deemed reliable but no warranty or representation is made as to the accuracy thereof and same is submitted subject to errors, omissions, prior sale or lease or withdrawal without notice.



TOTAL SF
115,400 SF

DATE
2-7-2023

TOTAL OFFICE SF
SCALE

ADDRESS
10800 N. Ambassador Drive
Kansas City, MO

PLAN TYPE
Floor Plan



THE BARNEY BUILDING
 2000 SHAWNEE MISSION PARKWAY | SUITE 400
 MISSION WOODS, KANSAS 66205
KARBANK.COM