

# KARBANK

REAL ESTATE COMPANY

INDUSTRIAL | OFFICE | COMMERCIAL  
BROKERAGE & DEVELOPMENT  
ESTABLISHED 1990

6,784 SF  
FOR LEASE



## 11250 CORPORATE AVENUE LENEXA, KANSAS OFFICE BUILDING

### FEATURES

- Dedicated entrance
- Newly remodeled building
- All new floor to ceiling glass overlooking lake
- Newly renovated interior with high ceilings throughout
- Upgraded building exterior including wood accents
- Lush landscaped property with newly constructed patios
- Beautiful lake views
- New parking lot with ample parking

**RATE: \$15.95 NNN**

For more information  
please contact

JOHN DELZER  
jd@karbank.com

PAUL FOGEL, SIOR  
pf@karbank.com

THE BARNEY BUILDING  
2000 SHAWNEE MISSION PARKWAY  
SUITE 400  
MISSION WOODS, KS 66205

MAIN 816.221.4488  
FAX 816.221.4494

KARBANK.COM

Information furnished regarding property is from sources deemed reliable but no warranty or representation is made as to the accuracy thereof and same is submitted subject to errors, omissions, prior sale or lease or withdrawal without notice.



# KARBANK

REAL ESTATE COMPANY

INDUSTRIAL | OFFICE | COMMERCIAL  
BROKERAGE & DEVELOPMENT  
ESTABLISHED 1990

6,784 SF  
FOR LEASE



THE BARNEY BUILDING  
2000 SHAWNEE MISSION PARKWAY  
SUITE 400  
MISSION WOODS, KS 66205

MAIN 816.221.4488  
FAX 816.221.4494

KARBANK.COM

Information furnished regarding property is from sources deemed reliable but no warranty or representation is made as to the accuracy thereof and same is submitted subject to errors, omissions, prior sale or lease or withdrawal without notice.



# KARBANK

REAL ESTATE COMPANY

INDUSTRIAL | OFFICE | COMMERCIAL  
BROKERAGE & DEVELOPMENT  
ESTABLISHED 1990

6,784SF  
FOR LEASE



THE BARNEY BUILDING  
2000 SHAWNEE MISSION PARKWAY  
SUITE 400  
MISSION WOODS, KS 66205

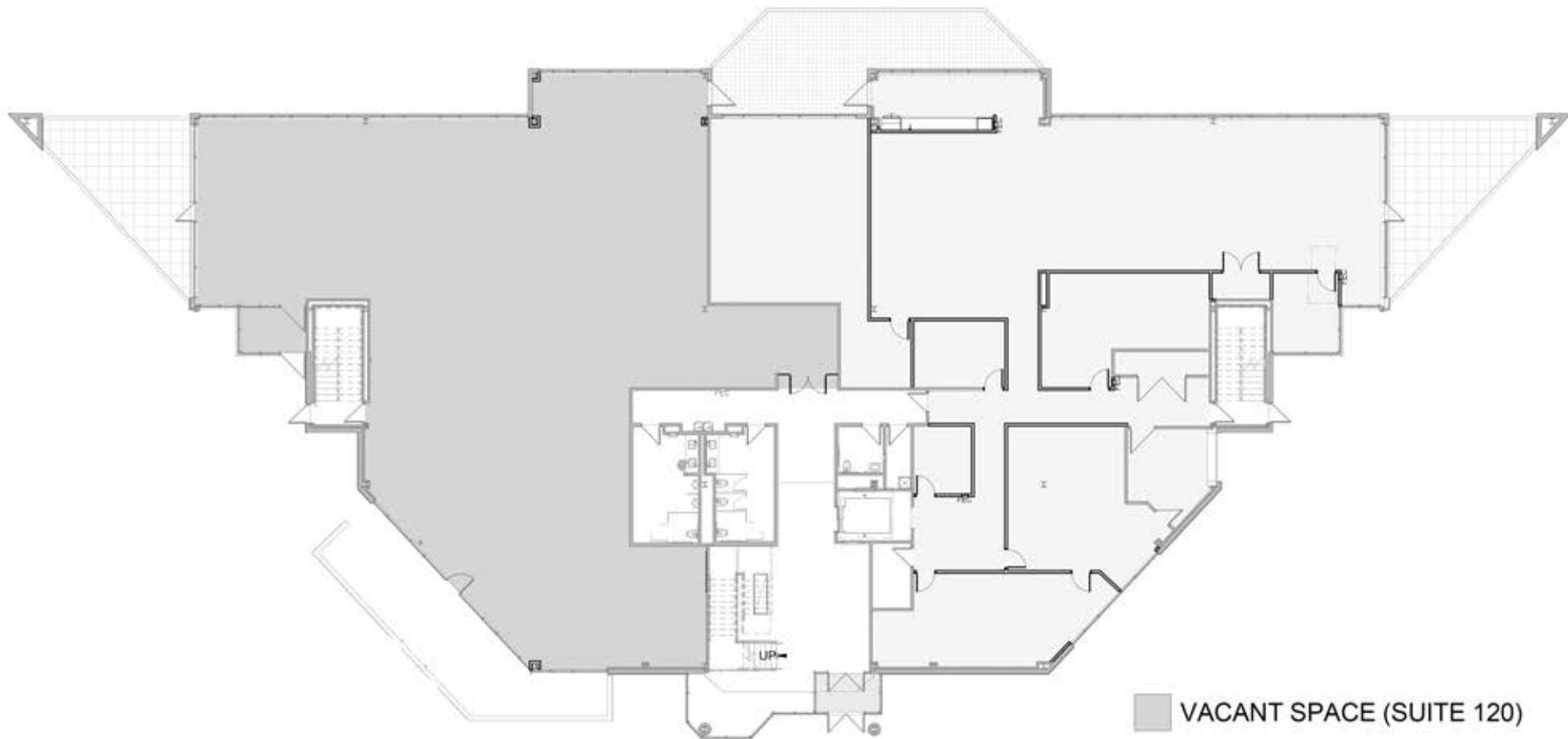
MAIN 816.221.4488  
FAX 816.221.4494

KARBANK.COM

Information furnished regarding property is from sources deemed reliable but no warranty or representation is made as to the accuracy thereof and same is submitted subject to errors, omissions, prior sale or lease or withdrawal without notice.







■ VACANT SPACE (SUITE 120)

**KARBANK**  
REAL ESTATE COMPANY

THE BARNEY BUILDING  
2000 SHAWNEE MISSION PARKWAY | SUITE 400  
MISSION WOODS, KANSAS 66205  
[KARBANK.COM](http://KARBANK.COM)

ADDRESS **11250 Corporate Avenue  
Lenexa, KS 66219**

PLAN TYPE  
**Floor Plan**

TOTAL SF  
**6,784 SF**

TOTAL OFFICE SF

DATE  
**10-12-2022**

SCALE  
**N/A**

