

17200 WEST 119TH STREET OLATHE, KS

119TH STREET TECH PARK BUILDING 2



Beautifully built-out Class A office space with fantastic light and high ceilings.



FEATURES

- Flexible for many uses:
 - office
 - flex
 - lab
 - medical
 - manufacturing
 - call center
- Existing furniture and generator included
- Dock-high loading
- 6 per 1,000 parking ratio
- Ample power
- Divisible
- Excellent access off of I-35 and 119th Street
- Available immediately
- \$14.95/SF NNN

CONTACT DETAILS

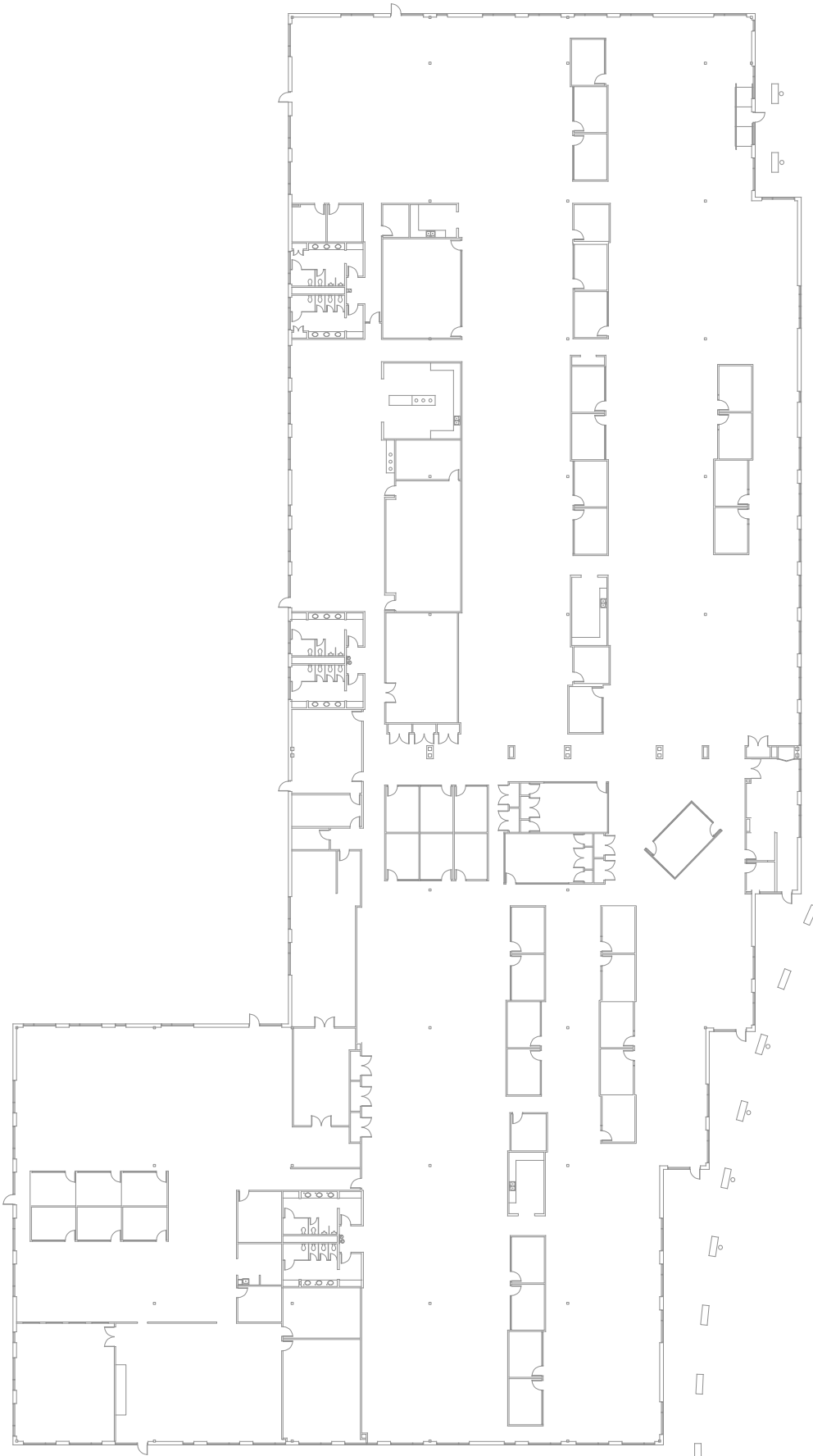
✉ JOHN DELZER
jd@karbank.com

✉ PAUL FOGEL, SIOR
pf@karbank.com

☎ 816.221.4488
816.221.4494 fax

🌐 karbank.com

Information furnished regarding property is from sources deemed reliable but no warranty or representation is made as to the accuracy thereof and same is submitted subject to errors, omissions, prior sale or lease or withdrawal without notice.



KARBANK
REAL ESTATE COMPANY

Perspective
ARCHITECTURE + DESIGN

2000 SHAWNEE MISSION PARKWAY
MISSION WOODS, KANSAS 66205
816 502 1500 + WWW.PAD.STUDIO

PROJECT

OLATHE TECH PARK - BUILDING 2

17200 W 119TH STREET
OLATHE, KANSAS 66061

PROJECT NUMBER

SHEET AUTHOR
K. MILLER

SCALE: 1/32" = 1'-0"
EXISTING FLOOR PLAN

SHEET NUMBER
A01

DATE
APRIL 27, 2023

© 2023 PERSPECTIVE ARCHITECTURE. ALL RIGHTS RESERVED. NO PART OF THIS DOCUMENT MAY BE REPRODUCED OR TRANSMITTED IN ANY FORM OR BY ANY MEANS WITHOUT THE WRITTEN PERMISSION OF PERSPECTIVE ARCHITECTURE, A DBA OF LLC.



KARBANK
REAL ESTATE COMPANY

Perspective
ARCHITECTURE + DESIGN

2000 SHAWNEE MISSION PARKWAY
MISSION WOODS, KANSAS 66205
816 502 1500 + WWW.PAD.STUDIO

PROJECT
OLATHE TECH PARK - BUILDING 2

17200 W 119TH STREET
OLATHE, KANSAS 66061

PROJECT NUMBER
SHEET AUTHOR
K. MILLER
DATE
APRIL 27, 2023

SCALE 1/32" = 1'-0"

FLOOR PLAN WITH EXISTING FURNITURE

SHEET NUMBER
A02

© 2023 PERSPECTIVE ARCHITECTURE. ALL RIGHTS RESERVED. NO PART OF THIS DOCUMENT MAY BE REPRODUCED OR TRANSMITTED IN ANY FORM OR BY ANY MEANS WITHOUT THE WRITTEN PERMISSION OF PERSPECTIVE ARCHITECTURE, L.P. OR KARL LLC.